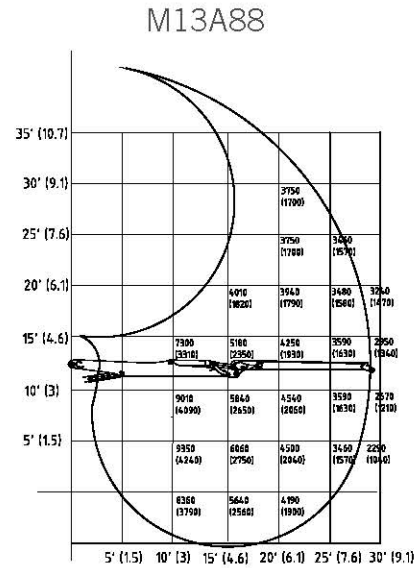
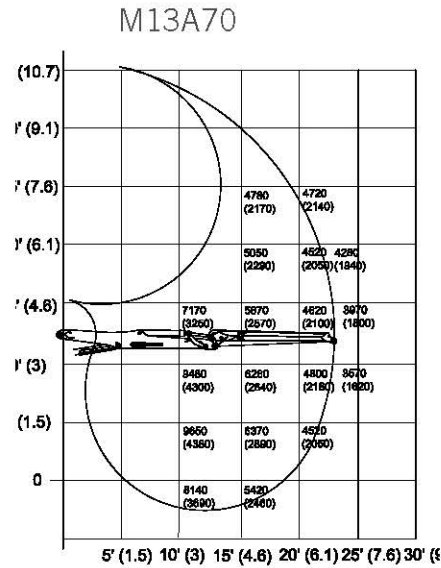


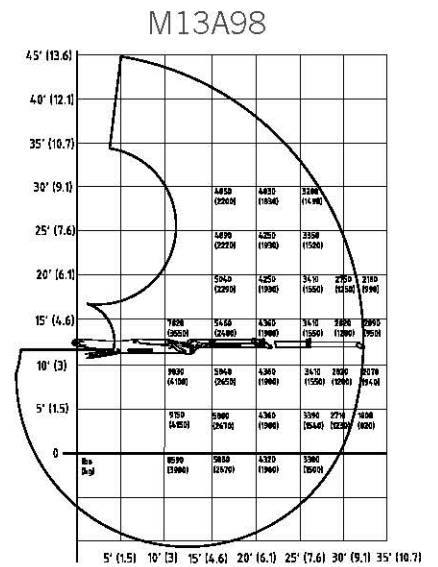
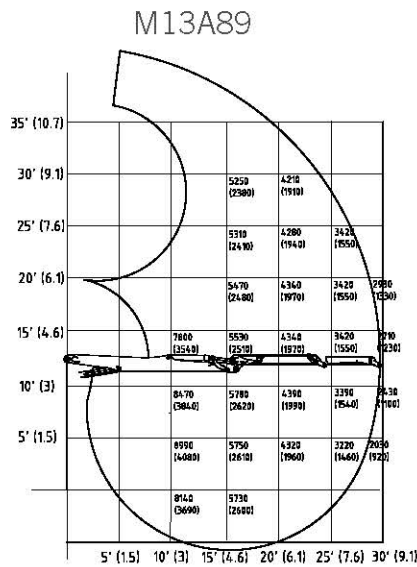
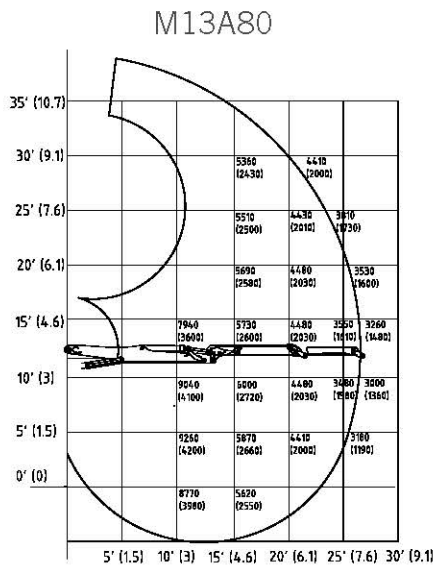
# A-LINE

Technical Data

## Fixed booms



## Tele booms



## Measurements

	M13A					
	fixed	single	fixed	single	double	
Boom system						
Boom type	70	80	88	89	98	
Lifting moment net	[ft. lbs] / [kNm]	98,100 (133)	92,200 (125)	92,200 (125)	89,250 (121)	89,250 (121)
Slewing torque net	[ft. lbs] / [kNm]	14 010 (19)				
Slewing angle	[°]	endless				
Max. outreach	[ft] / [m]	23' 5" (7,1)	26' 5" (8,0)	28' 10" (8,8)	29' 3" (8,9)	32' 9,8)
Operating pressure	[psi] / [bar]	3 410 (235)				
Recommended pump capacity	2K [US gal./min] / 2K [l/min]	2 x 21 (2 x 80)				
Dead weight with trailer column (GAK), without link/rotator	[lbs] / [kg]	4740 (2150)	5090 (2310)	4940 (2240)	5220 (2370)	5360 (2430)
Dead weight with truck column (GAL), without link/rotator	[lbs] / [kg]	4930 (2235)	5280 (2395)	5110 (2320)	5410 (2455)	5540 (2510)